



<b>Free standing height</b>	60.5 m
<b>Rated/Max.Load moment</b>	160/184 t·m
<b>Max.Load capacity</b>	10 t
<b>Tip load capacity</b>	1.8 t

# **JHT6518H-10**

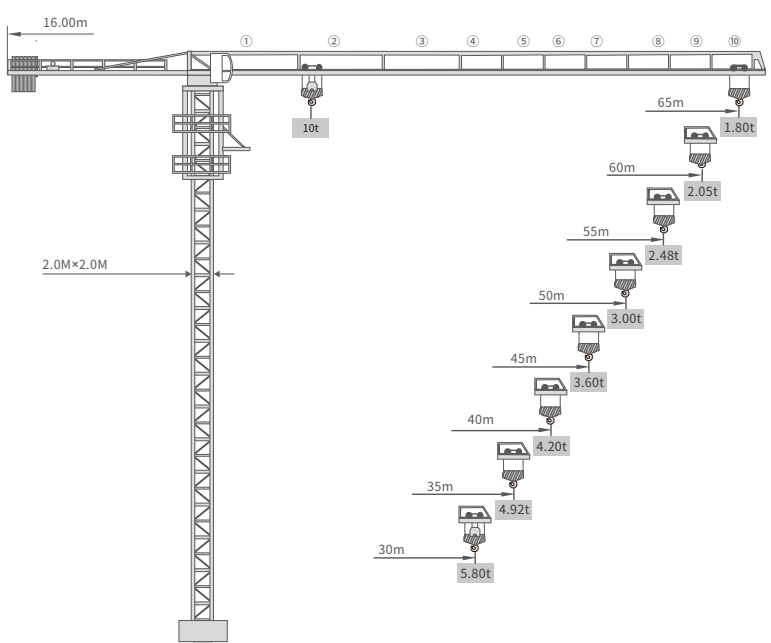
## **TOWER CRANE**

# JHT6518H-10 SPECIFICATIONS >>>

## PERFORMANCE DATA

Load-lifting height(m)		60.5 (fixed type)	261.5 (With anchorage)
Max.load capacity(t)		10	
Min/Max.working radius(m)		2.7 / 65	
Rated/Max.load moment(t·m)		160 / 184	
Hoisting Mechanism	Magnification	2 Falls	4 Falls
	Lifting speed(m/min)	108/72/45	54/36/22
	Lifting weight(t)	1.5/3.5/5.0	3.0/7.0/10.0
	Power(kW)	45	45
Slewing Mechanism	Speed(r/min)	0~0.6	
	Power(kW)	2×5.5	
Trolleying Mechanism	Speed(m/min)	0~60	
	Power(kW)	5.5	
Climbing Mechanism	Working pressure(MPa)	28	
	Speed(m/min)	0.4~0.7	
	Power(kW)	7.5	
Total power(kW)		61.5(climbing motor excluded)	
Working temperature(°C)		-20~42	

## DIMENSIONS

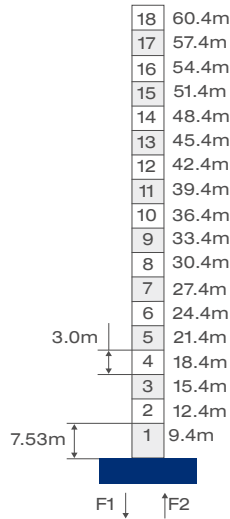
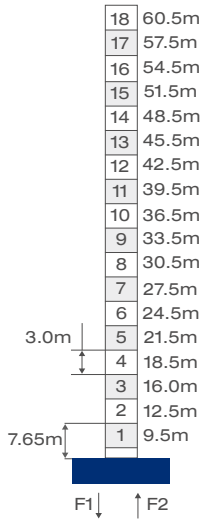


## TOWER COMPOSITION AND SUPPORT REACTION WITH DIFFERENT FOUNDATIONS

### Fixed Leg



### Embedded Bolt



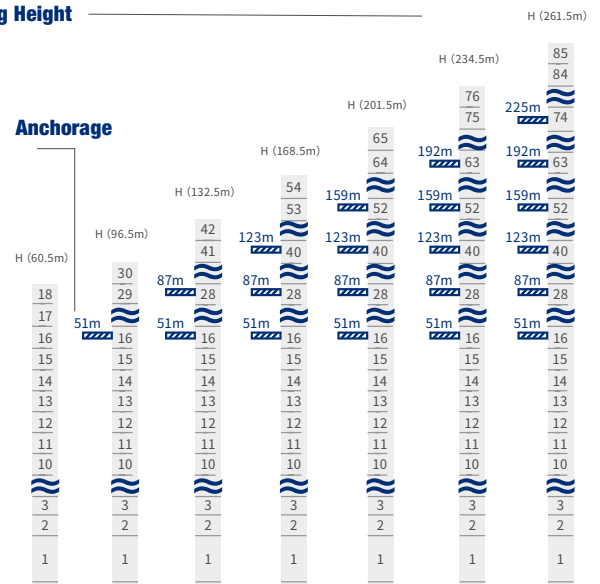
	FIXED LEG		EMBEDDED BOLT	
	On-service	Out-of service	On-service	Out-of service
F1 (T)	106.5	137.6	106.5	137.6
F2 (T)	214.5	233.6	214.5	233.6

## LOAD DIAGRAMS

Radius (m)	2.7~15.67	20	25	30	35	40	45	50	55	60	65
4Falls (t)	10.00	7.63	5.92	4.78	3.97	3.36	2.88	2.50	2.19	1.94	1.72
2Falls (t)	5.00	5.00	5.00	4.86	4.05	3.44	2.96	2.58	2.27	2.02	1.80

## ANCHORAGES

### Hoisting Height



### Free Standing Height